

AKIPS Network Monitor
Requesting New SNMP MIB Objects



AKIPS Pty Ltd

May 16, 2018

Copyright

Copyright © 2018 AKIPS Holdings Pty Ltd. All rights reserved worldwide. No part of this document may be reproduced by any means nor modified, decompiled, disassembled, published or distributed, in whole or in part, or translated to any electronic medium or other means without the written consent of AKIPS Holdings Pty Ltd. All right, title and interest in and to the software and documentation are and shall remain the exclusive property of AKIPS and its licensors.

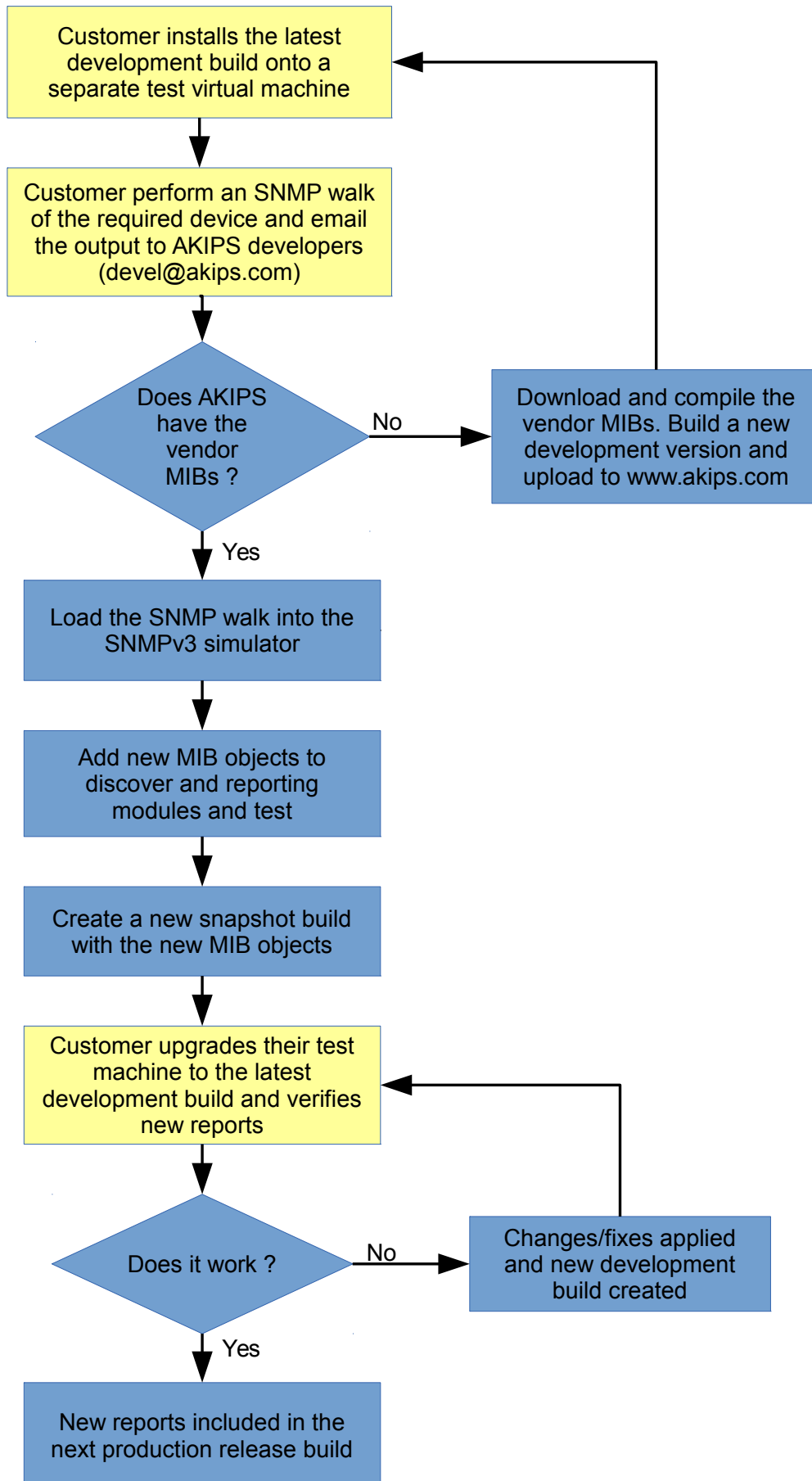
All other trademarks contained in this document are the property of their respective owners.

AKIPS DISCLAIMS ALL WARRANTIES, CONDITIONS OR OTHER TERMS, EXPRESS OR IMPLIED, STATUTORY OR OTHERWISE, ON SOFTWARE AND DOCUMENTATION FURNISHED HEREUNDER INCLUDING WITHOUT LIMITATION THE WARRANTIES OF DESIGN, MERCHANTABILITY OR FITNESS FOR A PARTICULAR PURPOSE AND NONINFRINGEMENT. IN NO EVENT SHALL AKIPS, ITS SUPPLIERS OR ITS LICENSORS BE LIABLE FOR ANY DAMAGES, WHETHER ARISING IN TORT, CONTRACT OR ANY OTHER LEGAL THEORY EVEN IF AKIPS HAS BEEN ADVISED OF THE POSSIBILITY OF SUCH DAMAGES.

Contact AKIPS

Web Site: <https://www.akips.com>
Email: info@akips.com

Flowchart for Requesting New MIB Objects



Instructions

1. Go to **Tools** ⇒ **Ping / SNMP Walk**
2. Use the 'Device' selection to select the device you wish to walk. Once selected, all of the device's relevant configuration should populate the SNMP Walk tool (eg. IP Address, SNMP Version, Community or SNMPv3 credentials).
3. Use the **MIB Selector** to select **All Objects**. This will ensure a complete walk of the device.
4. Select **SNMP Walk**. If the walk is successful, go to Step 5. If the walk exceeds 200,000 MIB Objects, then it may be too excessive to display in your browser, therefore it would be better to only walk a portion of the MIB tree. To do this:
 - (a) Close the browser tab, which will stop the current walk request.
 - (b) Navigate back to the **Ping / SNMP Walk** tool.
 - (c) You will need to walk a specific Table instead of the whole device. Search the following list for a convenient portion of the MIB table to walk:
http://www.akips.com/downloads/akips_mibs.txt
 - (d) If you find the table that you wish to walk, then you can enter the details as free text into the 'MIB.Object' section of the Ping/SNMP Walk Tool. For example, you may enter:
BAY-STACK-EAPOL-EXTENSION-MIB.bseeMultiHostStatusTable
 - (e) Select 'SNMP Walk'
5. When the walk is completed, you will see a 'Download' link at the top of the screen. Download and save the file without changing its name.
6. Send it through to:
To: support@akips.com
Subject: New MIB Request for {vendor}

If there is anything specific that you would like to monitor on the device (other than the obvious CPU/Mem/Temp etc), then please include the details of what it is you would like to report on.

Please walk as many different models as you can to ensure we get full coverage of your equipment.